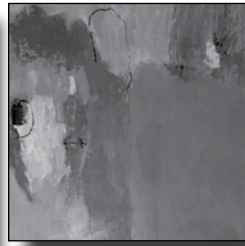
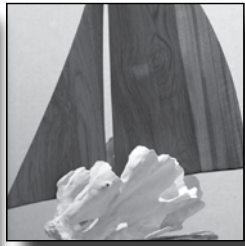
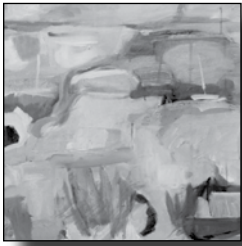
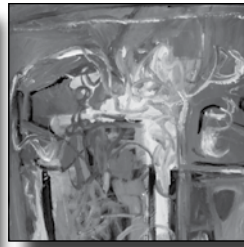


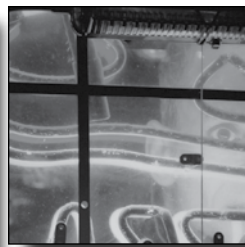
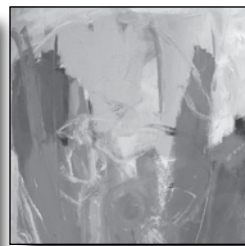
## SHOW SUBMISSION GUIDELINES



- Artwork must be current (less than 3 years old), no larger than 44x44 inches and original creations by the artist not under a teacher's instruction. Exceptions may be made on size if space allows.
- Artwork shown in one judged WAA gallery show will not be accepted in future judged WAA gallery shows.
- All traditional two-dimensional work must be framed, wired and ready to hang or otherwise show worthy and ready to sell. Frames are not required on all artwork if the presentation is current with today's gallery/museum standards. No saw-toothed hangers.
- All works must be for sale.

- Entrance fees are non-refundable.
- WAA collects a commission on works sold — (30% members; 40% non-members).
- WAA is not liable for loss or damaged work and recommends artists have their work insured.
- Sculptures must be easy to move.
- The WAA reserves the right to refuse entry to works that do not fit its community's standards.
- Entry to Shows: Maximum – 3 entries
  - Members: \$14 per entry or 3 for \$35
  - Non-Members: \$17 per entry or 3 for \$45

## 2014 Show Calendar 2014 Show Calendar



### IN GENERAL...

- Member shows are for general, life and artist members and will be judged with ribbon awards.
- Open juried shows are open to members and non-members and have cash awards.
- Juried Artist Member shows are for artist members only.
- Show registration hours are:
  - Wednesday, 11am - 3pm & 5-7pm
  - Thursday, 11am - 3pm.
- Visa/Mastercard/checks and cash gladly accepted.
- Opening receptions are free and open to the public.
- The gallery is wheelchair accessible — admission is free.
- For more membership info, please call the gallery at 401-294-6840 or visit our website at [www.wickfordart.org](http://www.wickfordart.org).

### A BIT ABOUT US...

The Wickford Art Association, which began in 1962, incorporated in 1969 and now has over 350 members, hosts numerous art exhibits, classes, workshops, monthly lectures and demonstrations — all of which are open to the public.

WAA proudly produces the Wickford Art Festival, ranked #1 in New England, which features 200 exhibitors from around the world. In 2011 the Wickford Art Festival was voted "Best Of" by Rhode Island Monthly Magazine, and in 2012 our Festival celebrated its 50th Anniversary. We also host an annual competition and award \$5,000 in scholarships to the State of Rhode Island's top public high school seniors accepted into an art college.

Membership is open to anyone interested in the arts — there are several levels to choose from. We also welcome non-artists community members whose support of the arts help us reach our goals.

### DIRECTIONS TO THE GALLERY...

- From Providence and Points North:

Take Route 95 South to Exit 9 (left), Route 4 South. Follow Route 4 South for 5 miles to Exit 5A Route 102 South, toward Wickford Center. Bear right at Center to Route 1-A South (over bridge). Follow 1-A approximately 1/2 mile to the traffic light. Take a left onto Beach Street. Gallery is on right at the end of the street.

- From Westerly and Points South:

Take Route 95 North to Exit 5A, Route 102 South/Exeter. Follow Rte 102 South approximately 9 miles to Wickford Center. Bear right at Center to Route 1-A South. Follow 1-A approximately 1/2 mile to the traffic light. Take a left onto Beach Street. Gallery is on the right at the end of the street.

Visit [www.wickfordart.org](http://www.wickfordart.org) for map.

